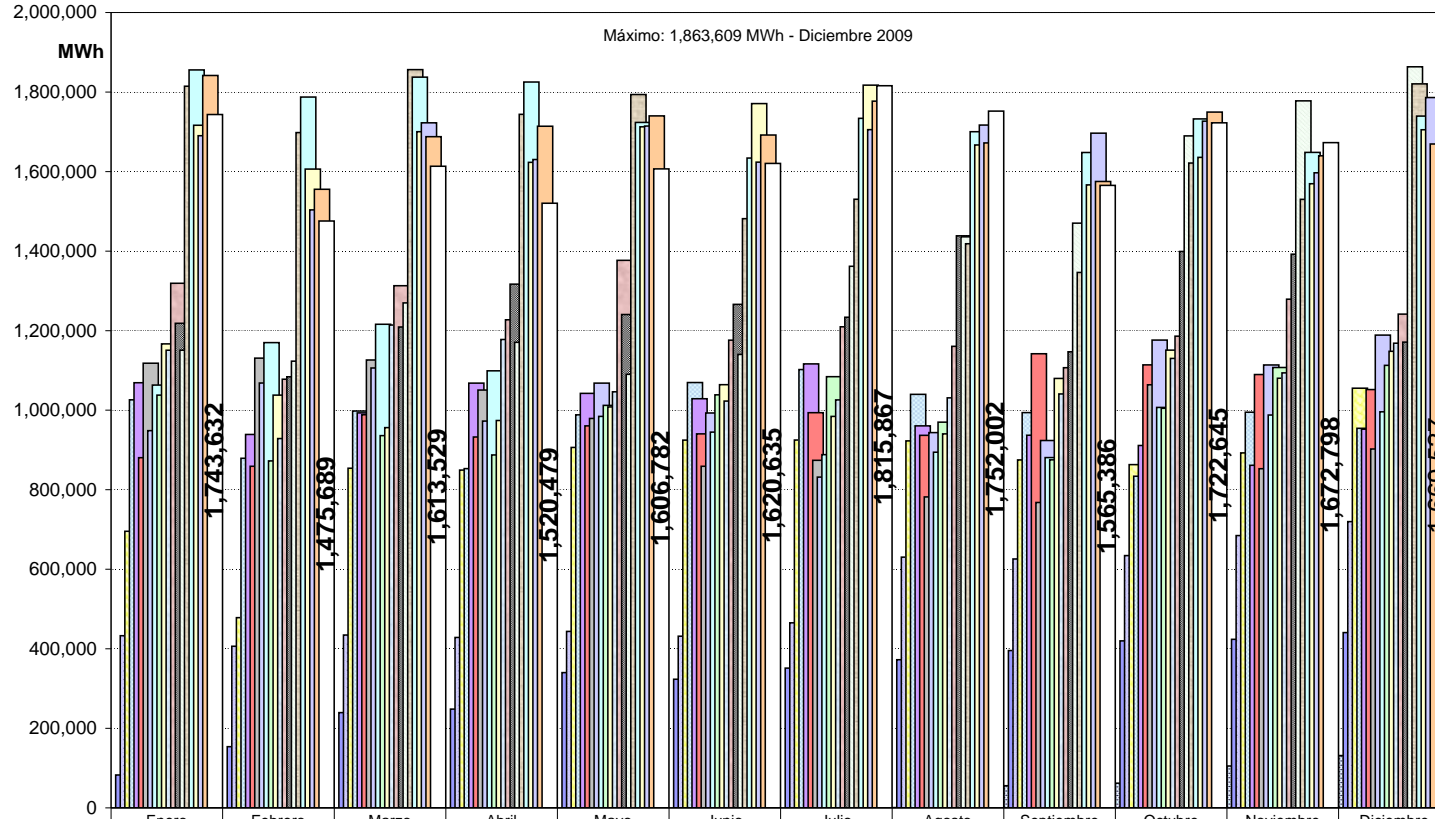
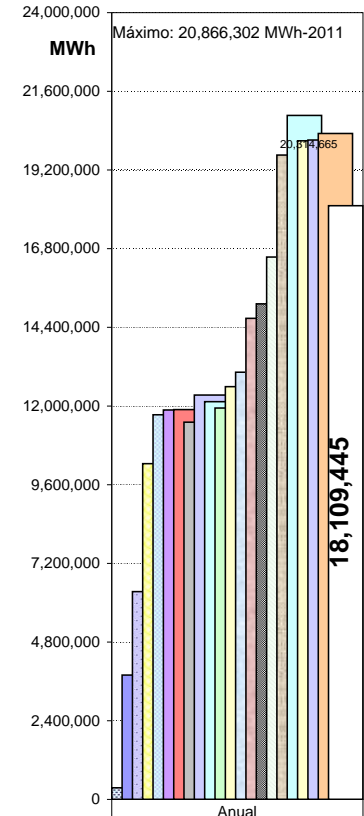


ENERGIA DE YACYRETÁ DESDE PUESTA EN FUNCIONAMIENTO PRIMERA UNIDAD

MENSUALES



ANUALES

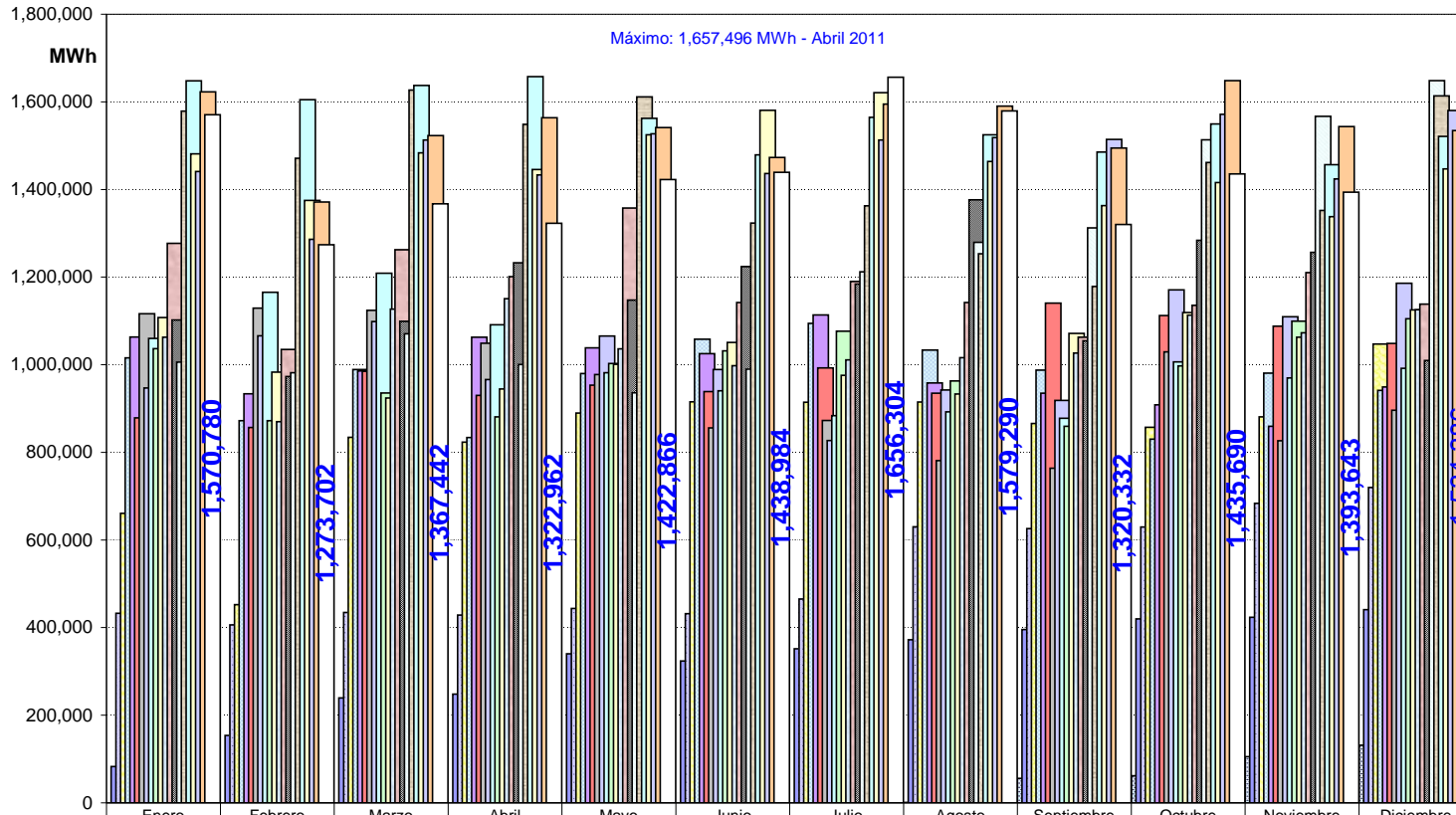


| | | | | | | | | | | | | |
|------|-----------|-----------|-----------|-----------|-----------|-----------|-----------|-----------|-----------|-----------|-----------|-----------|
| 1994 | | | | | | | | 826 | 55,808 | 62,043 | 105,254 | 131,430 |
| 1995 | 82,725 | 153,902 | 239,598 | 248,286 | 340,198 | 323,527 | 351,549 | 372,443 | 395,580 | 419,897 | 423,745 | 440,895 |
| 1996 | 432,826 | 406,332 | 434,687 | 428,430 | 443,845 | 431,606 | 465,285 | 630,482 | 625,808 | 634,449 | 684,778 | 719,896 |
| 1997 | 695,640 | 478,448 | 853,970 | 849,365 | 906,280 | 924,734 | 924,942 | 922,860 | 874,894 | 863,159 | 892,706 | 1,055,293 |
| 1998 | 1,026,100 | 879,220 | 997,980 | 853,028 | 988,412 | 1,069,650 | 1,102,135 | 1,039,960 | 993,949 | 833,916 | 994,867 | 954,498 |
| 1999 | 1,069,093 | 938,959 | 993,182 | 1,067,994 | 1,042,262 | 1,028,792 | 1,116,528 | 960,502 | 936,925 | 911,281 | 861,553 | 952,374 |
| 2000 | 880,531 | 859,110 | 988,559 | 932,685 | 960,706 | 940,476 | 993,673 | 936,847 | 1,142,400 | 1,114,048 | 1,089,727 | 1,051,954 |
| 2001 | 1,118,135 | 1,130,985 | 1,126,356 | 1,050,735 | 979,352 | 858,912 | 873,994 | 781,922 | 767,967 | 1,063,843 | 852,959 | 902,334 |
| 2002 | 948,700 | 1,068,235 | 1,106,161 | 972,585 | 1,068,197 | 993,113 | 831,764 | 943,785 | 923,709 | 1,176,318 | 1,113,871 | 1,188,800 |
| 2003 | 1,063,206 | 1,169,984 | 1,216,206 | 1,099,128 | 984,325 | 944,839 | 888,297 | 894,256 | 880,796 | 1,007,082 | 987,886 | 995,907 |
| 2004 | 1,037,821 | 872,476 | 936,063 | 887,434 | 1,012,217 | 1,038,561 | 1,084,287 | 969,912 | 875,290 | 1,004,754 | 1,107,266 | 1,112,709 |
| 2005 | 1,166,807 | 1,037,814 | 956,206 | 974,060 | 1,008,316 | 1,064,078 | 984,308 | 940,556 | 1,079,932 | 1,150,952 | 1,080,280 | 1,148,158 |
| 2006 | 1,150,759 | 928,595 | 1,214,148 | 1,177,880 | 1,046,358 | 1,023,019 | 1,025,792 | 1,031,060 | 1,040,776 | 1,130,260 | 1,093,872 | 1,168,536 |
| 2007 | 1,319,283 | 1,077,831 | 1,313,143 | 1,227,323 | 1,376,794 | 1,176,103 | 1,209,634 | 1,160,662 | 1,106,892 | 1,186,129 | 1,279,204 | 1,241,673 |
| 2008 | 1,218,521 | 1,083,946 | 1,209,133 | 1,317,078 | 1,240,590 | 1,266,174 | 1,233,797 | 1,438,480 | 1,146,781 | 1,399,238 | 1,392,275 | 1,171,158 |
| 2009 | 1,150,738 | 1,123,298 | 1,269,799 | 1,170,735 | 1,090,187 | 1,140,370 | 1,361,786 | 1,435,938 | 1,470,246 | 1,689,822 | 1,777,960 | 1,863,609 |
| 2010 | 1,814,730 | 1,698,207 | 1,856,386 | 1,744,126 | 1,793,947 | 1,481,551 | 1,530,434 | 1,418,559 | 1,346,356 | 1,621,476 | 1,530,280 | 1,820,630 |
| 2011 | 1,855,668 | 1,787,512 | 1,837,484 | 1,825,153 | 1,723,623 | 1,633,986 | 1,734,016 | 1,700,404 | 1,648,050 | 1,732,376 | 1,648,367 | 1,739,664 |
| 2012 | 1,716,579 | 1,606,281 | 1,700,230 | 1,623,288 | 1,712,564 | 1,771,047 | 1,817,470 | 1,666,851 | 1,566,480 | 1,635,688 | 1,569,542 | 1,705,164 |
| 2013 | 1,690,206 | 1,503,647 | 1,722,557 | 1,630,336 | 1,714,635 | 1,623,808 | 1,705,590 | 1,717,132 | 1,696,700 | 1,726,917 | 1,597,046 | 1,786,140 |
| 2014 | 1,841,608 | 1,555,554 | 1,687,918 | 1,714,054 | 1,740,118 | 1,692,090 | 1,777,092 | 1,672,164 | 1,575,171 | 1,749,776 | 1,639,592 | 1,669,527 |
| 2015 | 1,743,632 | 1,475,689 | 1,613,529 | 1,520,479 | 1,606,782 | 1,620,635 | 1,815,867 | 1,752,002 | 1,565,386 | 1,722,645 | 1,672,798 | |

| | |
|------|------------|
| 1994 | 355,361 |
| 1995 | 3,792,345 |
| 1996 | 6,338,424 |
| 1997 | 10,242,292 |
| 1998 | 11,733,715 |
| 1999 | 11,879,445 |
| 2000 | 11,890,356 |
| 2001 | 11,507,494 |
| 2002 | 12,335,237 |
| 2003 | 12,131,912 |
| 2004 | 11,938,790 |
| 2005 | 12,591,468 |
| 2006 | 13,031,055 |
| 2007 | 14,674,671 |
| 2008 | 15,117,172 |
| 2009 | 16,544,487 |
| 2010 | 19,656,681 |
| 2011 | 20,866,302 |
| 2012 | 20,091,184 |
| 2013 | 20,114,714 |
| 2014 | 20,314,665 |
| 2015 | 18,109,445 |

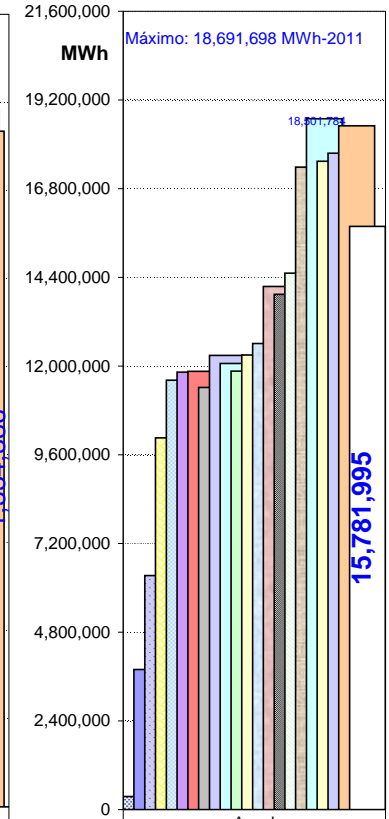
ENERGIA DE YACYRETÁ AL SADI DESDE PUESTA EN FUNCIONAMIENTO PRIMERA UNIDAD

MENSUALES



| Año | Enero | Febrero | Marzo | Abril | Mayo | Junio | Julio | Agosto | Septiembre | Octubre | Noviembre | Diciembre |
|------|-----------|-----------|-----------|-----------|-----------|-----------|-----------|-----------|------------|-----------|-----------|-----------|
| 1994 | | | | | | | | 826 | 55,808 | 62,043 | 105,254 | 131,430 |
| 1995 | 82,725 | 153,902 | 239,598 | 248,286 | 340,198 | 323,527 | 351,549 | 372,443 | 395,580 | 419,897 | 423,745 | 440,895 |
| 1996 | 432,826 | 406,332 | 434,687 | 428,430 | 443,845 | 431,606 | 465,285 | 630,198 | 625,808 | 629,717 | 683,510 | 719,896 |
| 1997 | 660,696 | 452,618 | 834,124 | 823,118 | 889,830 | 915,508 | 914,578 | 914,902 | 866,096 | 857,272 | 880,936 | 1,047,310 |
| 1998 | 1,015,768 | 872,082 | 989,198 | 833,977 | 979,854 | 1,058,430 | 1,094,334 | 1,033,611 | 987,876 | 830,070 | 980,785 | 941,325 |
| 1999 | 1,063,419 | 933,865 | 985,801 | 1,063,012 | 1,038,626 | 1,025,109 | 1,113,769 | 958,191 | 934,967 | 908,320 | 859,502 | 949,058 |
| 2000 | 878,745 | 856,894 | 984,762 | 930,146 | 953,339 | 938,778 | 992,504 | 935,052 | 1,140,632 | 1,112,416 | 1,088,054 | 1,048,706 |
| 2001 | 1,116,134 | 1,129,266 | 1,123,998 | 1,049,006 | 977,673 | 855,728 | 872,830 | 781,196 | 763,664 | 1,029,174 | 826,682 | 896,324 |
| 2002 | 946,880 | 1,066,034 | 1,098,658 | 966,150 | 1,065,520 | 989,240 | 826,812 | 942,290 | 918,742 | 1,170,798 | 1,109,540 | 1,185,754 |
| 2003 | 1,060,250 | 1,165,468 | 1,208,878 | 1,091,350 | 981,959 | 940,623 | 883,650 | 892,576 | 877,942 | 1,006,273 | 969,883 | 991,948 |
| 2004 | 1,036,812 | 872,263 | 935,653 | 880,993 | 1,003,010 | 1,031,528 | 1,076,608 | 962,833 | 859,680 | 997,491 | 1,099,509 | 1,104,731 |
| 2005 | 1,107,832 | 983,320 | 924,204 | 944,862 | 1,000,744 | 1,050,964 | 975,970 | 933,130 | 1,071,282 | 1,118,896 | 1,062,880 | 1,125,068 |
| 2006 | 1,062,716 | 869,950 | 1,126,726 | 1,150,710 | 1,035,996 | 997,832 | 1,011,226 | 1,016,202 | 1,026,714 | 1,113,272 | 1,072,782 | 1,125,574 |
| 2007 | 1,277,008 | 1,034,766 | 1,262,488 | 1,201,294 | 1,357,562 | 1,141,904 | 1,190,040 | 1,142,218 | 1,062,676 | 1,135,684 | 1,210,150 | 1,138,324 |
| 2008 | 1,102,080 | 972,838 | 1,098,754 | 1,232,714 | 1,147,350 | 1,223,762 | 1,184,080 | 1,376,542 | 1,054,674 | 1,284,036 | 1,256,608 | 1,009,566 |
| 2009 | 1,005,924 | 981,834 | 1,070,414 | 1,000,388 | 936,052 | 989,972 | 1,212,000 | 1,279,492 | 1,312,352 | 1,513,176 | 1,566,736 | 1,648,332 |
| 2010 | 1,578,822 | 1,471,162 | 1,626,838 | 1,548,502 | 1,611,396 | 1,323,134 | 1,362,830 | 1,253,464 | 1,178,654 | 1,461,716 | 1,351,964 | 1,613,854 |
| 2011 | 1,648,188 | 1,604,916 | 1,637,610 | 1,657,496 | 1,562,166 | 1,478,906 | 1,564,616 | 1,524,886 | 1,485,424 | 1,549,638 | 1,456,616 | 1,521,236 |
| 2012 | 1,481,404 | 1,375,254 | 1,483,694 | 1,445,518 | 1,524,898 | 1,580,578 | 1,621,002 | 1,463,910 | 1,363,386 | 1,415,698 | 1,337,938 | 1,447,148 |
| 2013 | 1,440,800 | 1,286,326 | 1,513,064 | 1,433,060 | 1,527,040 | 1,436,590 | 1,512,732 | 1,518,506 | 1,514,310 | 1,571,326 | 1,424,210 | 1,580,134 |
| 2014 | 1,622,718 | 1,371,370 | 1,523,162 | 1,563,742 | 1,541,172 | 1,472,954 | 1,594,946 | 1,590,472 | 1,494,534 | 1,648,598 | 1,543,730 | 1,534,386 |
| 2015 | 1,570,780 | 1,273,702 | 1,367,442 | 1,322,962 | 1,422,866 | 1,438,984 | 1,656,304 | 1,579,290 | 1,320,332 | 1,435,690 | 1,393,643 | |

ANUALES

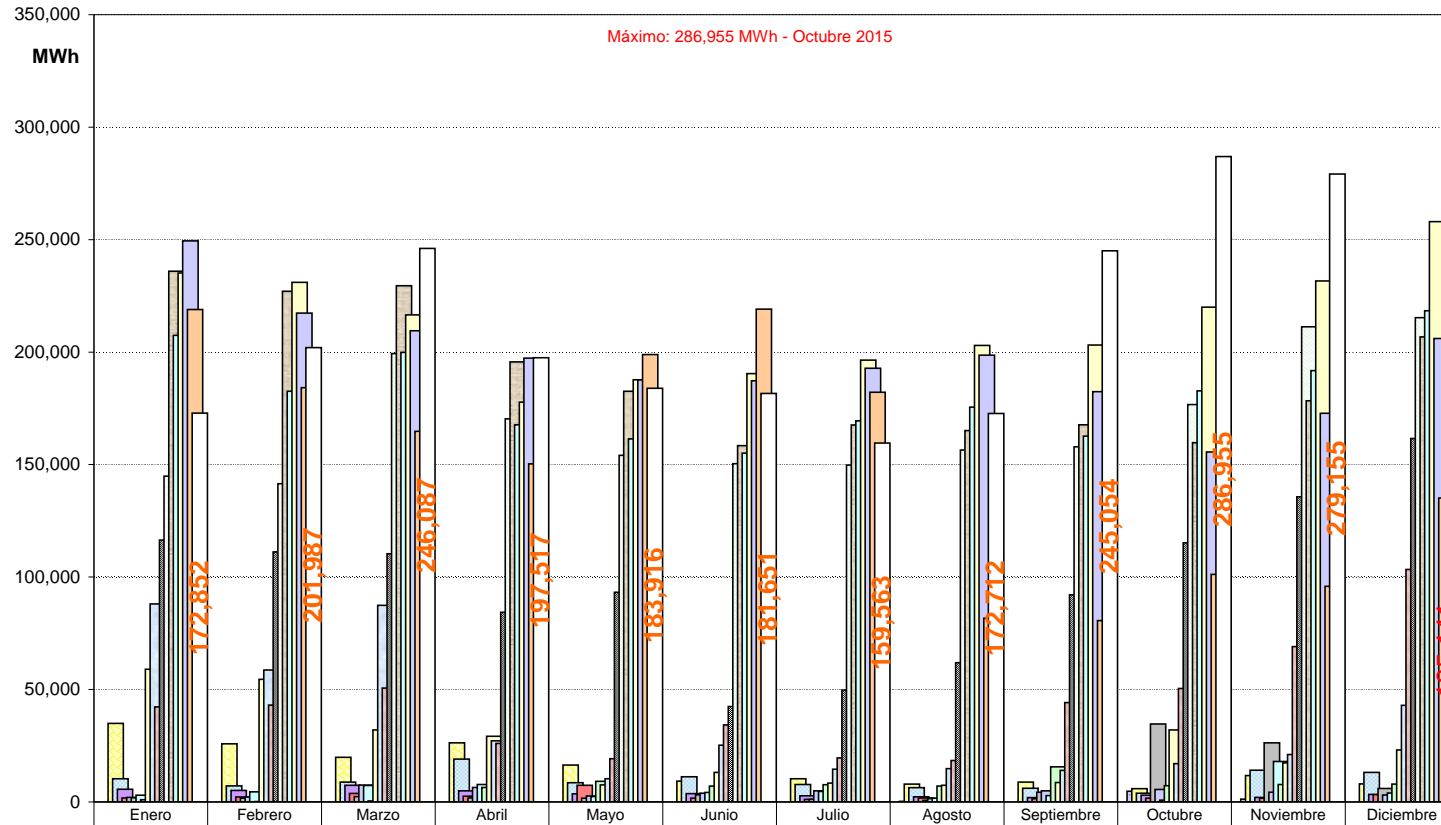


| Año | Producción Anual (MWh) |
|------|------------------------|
| 1994 | 355,361 |
| 1995 | 3,792,345 |
| 1996 | 6,332,139 |
| 1997 | 10,056,989 |
| 1998 | 11,617,309 |
| 1999 | 11,833,638 |
| 2000 | 11,860,029 |
| 2001 | 11,421,675 |
| 2002 | 12,286,418 |
| 2003 | 12,070,800 |
| 2004 | 11,861,111 |
| 2005 | 12,299,152 |
| 2006 | 12,609,700 |
| 2007 | 14,154,114 |
| 2008 | 13,943,004 |
| 2009 | 14,516,672 |
| 2010 | 17,382,336 |
| 2011 | 18,691,698 |
| 2012 | 17,540,428 |
| 2013 | 17,758,098 |
| 2014 | 18,501,784 |
| 2015 | 15,781,995 |



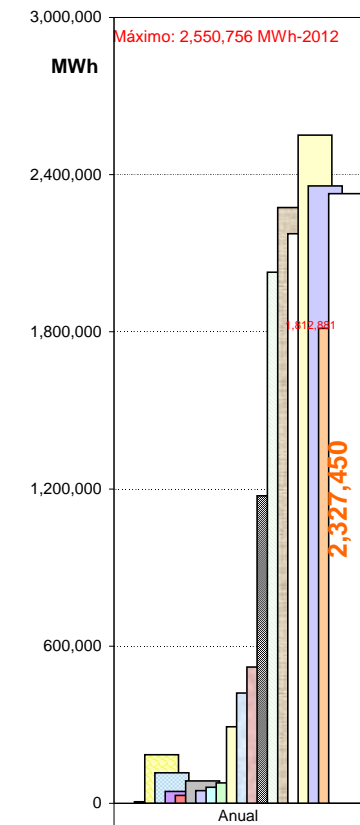
ENERGIA DE YACYRETÁ AL SINP DESDE PUESTA EN FUNCIONAMIENTO PRIMERA UNIDAD

MENSUALES



| | Enero | Febrero | Marzo | Abril | Mayo | Junio | Julio | Agosto | Septiembre | Octubre | Noviembre | Diciembre |
|------|---------|---------|---------|---------|---------|---------|---------|---------|------------|---------|-----------|-----------|
| 1994 | 0 | 0 | 0 | 0 | 0 | 0 | 0 | 0 | 0 | 0 | 0 | 0 |
| 1995 | 0 | 0 | 0 | 0 | 0 | 0 | 0 | 284 | 0 | 4,732 | 1,269 | 0 |
| 1996 | 34,944 | 25,830 | 19,846 | 26,247 | 16,450 | 9,226 | 10,364 | 7,958 | 8,798 | 5,887 | 11,770 | 7,983 |
| 1997 | 10,332 | 7,139 | 8,782 | 19,051 | 8,558 | 11,220 | 7,801 | 6,350 | 6,073 | 3,846 | 14,082 | 13,173 |
| 1998 | 5,674 | 5,094 | 7,381 | 4,983 | 3,636 | 3,683 | 2,759 | 2,311 | 1,958 | 2,961 | 2,051 | 3,316 |
| 1999 | 1,786 | 2,216 | 3,797 | 2,539 | 7,367 | 1,698 | 1,169 | 1,795 | 1,408 | 1,632 | 1,167 | 3,248 |
| 2000 | 2,001 | 1,719 | 2,358 | 1,729 | 1,679 | 3,184 | 1,164 | 726 | 4,303 | 34,669 | 26,277 | 6,011 |
| 2001 | 1,820 | 2,201 | 7,503 | 6,435 | 2,677 | 3,873 | 4,952 | 1,495 | 4,967 | 5,520 | 4,331 | 3,046 |
| 2002 | 2,956 | 4,516 | 7,328 | 7,778 | 2,366 | 4,216 | 4,647 | 1,680 | 2,854 | 809 | 18,003 | 3,959 |
| 2003 | 1,009 | 213 | 410 | 6,441 | 9,207 | 7,033 | 7,679 | 7,079 | 15,610 | 7,263 | 7,757 | 7,978 |
| 2004 | 58,975 | 54,494 | 32,002 | 29,198 | 7,572 | 13,114 | 8,338 | 7,426 | 8,650 | 32,056 | 17,400 | 23,090 |
| 2005 | 88,043 | 58,645 | 87,422 | 27,170 | 10,362 | 25,187 | 14,566 | 14,858 | 14,062 | 16,988 | 21,090 | 42,962 |
| 2006 | 42,275 | 43,065 | 50,655 | 26,029 | 19,232 | 34,199 | 19,594 | 18,444 | 44,216 | 50,445 | 69,054 | 103,349 |
| 2007 | 116,441 | 111,108 | 110,379 | 84,364 | 93,240 | 42,412 | 49,717 | 61,938 | 92,107 | 115,202 | 135,667 | 161,592 |
| 2008 | 144,814 | 141,464 | 199,385 | 170,347 | 154,135 | 150,398 | 149,786 | 156,446 | 157,894 | 176,646 | 211,224 | 215,277 |
| 2009 | 235,908 | 227,045 | 229,548 | 195,624 | 182,551 | 158,417 | 167,604 | 165,095 | 167,702 | 159,760 | 178,316 | 206,776 |
| 2010 | 207,480 | 182,596 | 199,874 | 167,657 | 161,457 | 155,080 | 169,400 | 175,518 | 162,626 | 182,738 | 191,751 | 218,428 |
| 2011 | 235,175 | 231,027 | 216,536 | 177,770 | 187,666 | 190,469 | 196,468 | 202,941 | 203,094 | 219,990 | 231,604 | 258,016 |
| 2012 | 249,406 | 217,321 | 209,493 | 197,276 | 187,595 | 187,218 | 192,858 | 198,626 | 182,390 | 155,591 | 172,836 | 206,006 |
| 2013 | 218,890 | 184,184 | 164,756 | 150,312 | 198,946 | 219,136 | 182,146 | 81,692 | 80,637 | 101,178 | 95,862 | 135,141 |
| 2014 | 172,852 | 201,987 | 246,087 | 197,517 | 183,916 | 181,651 | 159,563 | 172,712 | 245,054 | 286,955 | 279,155 | 135,141 |
| 2015 | | | | | | | | | | | | |

ANUALES



| | Anual |
|------|-----------|
| 1994 | 0 |
| 1995 | 0 |
| 1996 | 6,284 |
| 1997 | 185,303 |
| 1998 | 116,405 |
| 1999 | 45,807 |
| 2000 | 30,327 |
| 2001 | 85,818 |
| 2002 | 48,819 |
| 2003 | 61,112 |
| 2004 | 77,680 |
| 2005 | 292,316 |
| 2006 | 421,355 |
| 2007 | 520,557 |
| 2008 | 1,174,168 |
| 2009 | 2,027,815 |
| 2010 | 2,274,345 |
| 2011 | 2,174,604 |
| 2012 | 2,550,756 |
| 2013 | 2,356,616 |
| 2014 | 1,812,881 |
| 2015 | 2,327,450 |